

Manual & Automatic Nozzles

2

Wash Down Guns

4

Automatic Nozzles for AdBlue®

7

Nozzle Hangers, Cam Arm Fittings, IBC & Drum Adaptors

13

Dry Break Couplings

16

Hoses & Gravity Feed Kits

18

Steel Braided Hose Assemblies

21

Hose Break & Safety Break Couplings

22

Hose Reels

24



Manual Nozzle

- ▶ Suitable with diesel or biodiesel up to B30.
- ▶ Cast aluminium body.
- ▶ Can be used with gravity feed tanks or electric pumps.
- ▶ Integral hook for tidy storage when not in use.
- ▶ Master Carton box quantity 20.

NOZ.S2A

NOZ.S2AB

Stock Code	Description	Inlet	Max Flow	Max Pressure	Spout OD
NOZ.S2A	With swivel	1" F BSPP swivel	80L/min	50psi (3.5 bar)	25mm
NOZ.S2AB	With hose tail	1" hose tail swivel	80L/min	50psi (3.5 bar)	25mm



Manual Nozzle With Latch

- ▶ Complete with latch for use with hand pumps only.
- ▶ Choose diesel or unleaded version.
- ▶ Cast aluminum body.
- ▶ Integral hook for tidy storage when not in use.

NOZ.S2LA

NOZ.PU

Stock Code	Description	Inlet	Max Flow	Max Pressure	Spout OD
NOZ.S2LA	Diesel with latch	1" F BSPP swivel	80L/min	50psi (3.5 bar)	25mm
NOZ.PU	Unleaded with Latch	¾" F BSPP swivel	80L/min	50psi (3.5 bar)	20mm



PIUSI



Manual Nozzle Self 3000

- ▶ Suitable with diesel & oils to SAE 90.
- ▶ Aluminium body enclosed in a plastic shell.
- ▶ Can be used with gravity feed tanks or electric pumps.
- ▶ Integral hook for tidy storage when not in use.

NOZ.S3000

Stock Code	Description	ATEX	Inlet	Max Flow	Max Pressure	Spout OD
NOZ.S3000	With swivel (F00650000)	No	1" F BSPP swivel	150L/min	142psi (10 bar)	25mm



HYTEK ENGINEERED

2 YEAR WARRANTY



Manual Nozzle for AdBlue®

- ▶ Suitable with Adblue® & non drinking water.
- ▶ Can be used with gravity feed tanks or electric pumps.
- ▶ Integral hook for tidy storage when not in use.
- ▶ Viton seal.
- ▶ Spout has stainless steel tip for longer life.
- ▶ Two year warranty.

NOZ.AB

Stock Code	Description	Inlet	Max Flow	Max Pressure	Spout OD
NOZ.AB	AdBlue® with latch	1" BSPP fixed (¾" swivel hose tail)	80L/min	29psi (2 bar)	19mm

Manual Nozzle for AdBlue®

- ▶ Suitable with Adblue® & non drinking water.
- ▶ Can be used with gravity feed tanks or electric pumps.
- ▶ Integral hook for tidy storage when not in use.
- ▶ Viton seal.
- ▶ Spout has stainless steel tip for longer life.

PIUSI



NOZ.MAB

Stock Code	Description	Inlet	Max Flow	Max Pressure	Spout OD
NOZ.MAB	AdBlue® no latch (F14280000)	1" BSPP fixed (¾" swivel hose tail)	80L/min	29psi (2 bar)	19mm

Polyethylene Manual Nozzle

- ▶ Suitable with diesel.
- ▶ Polyethylene body.
- ▶ Can be used with gravity feed tanks & electric pumps.
- ▶ Integral hook for tidy storage when not in use.
- ▶ Nitrile seals, mild steel spring.

HYTEK
ENGINEERED



NOZ.C

Stock Code	Description	Inlet	Max Flow	Max Pressure	Spout OD
NOZ.C	Nitrile seals	¾" hose tail	60L/min	29psi (2 bar)	25mm

Tanker Delivery Nozzle

- ▶ Suitable with diesel or biodiesel & heating oils.
- ▶ Cast aluminium body.
- ▶ 2" F BSPP swivel lugged nut outlet.
- ▶ Supplied with aluminium spout, 40mm diameter x 185mm long.



NOZ.T

Stock Code	Description	Inlet	Max Flow	Max Pressure	Spout OD
NOZ.T	Tanker nozzle	1½" F BSPP swivel	415L/min	101psi (7 bar)	40mm



Gilmour Wash Down Gun

- ▶ Light duty wash down gun for water.
- ▶ Chrome plated zinc body, brass head & stainless-steel spring.
- ▶ Insulated grip for spraying hot or cold water.
- ▶ Max water temperature 50°C.
- ▶ Inlet 3/4" F BSPP supplied with garden hose type connector.

NOZ.PG

Stock Code	Description	Max Pressure
NOZ.PG	Gilmour wash down gun	100psi (7 bar)



Water Wash Down Gun

- ▶ Heavy Duty wash down gun for water.
- ▶ Brass body & stainless-steel internals.
- ▶ Blue rubber cover for maximum comfort & long life.
- ▶ Max water temperature 80°C.

NOZ.P

Stock Code	Description	Inlet	Max Pressure
NOZ.P	Water wash down gun 1/2"	1/2" F BSPP fixed	87psi (6 bar)



Water Top Up Nozzle

- ▶ Low pressure water gun.
- ▶ Can be used with water hose reels.
- ▶ For vehicle radiators & tanks.

NOZ.WB

Stock Code	Description	Inlet	Max Pressure
NOZ.WB	Water bibb nozzle 1/4"	1/4" F BSPP fixed	116psi (8 bar)



HYTEK
ENGINEERED



Ultra High Speed Automatic Nozzle

- ▶ Suitable for diesel or biodiesel up to B30.
- ▶ Automatically shuts off the flow when the vehicle tank is full.
- ▶ Ideal for refueling very large vehicles & heavy plant equipment.
- ▶ Cast aluminum body.
- ▶ 3 position stay open latch.
- ▶ For use with electric pumps only.

NOZ.250S

Stock Code	Description	Inlet	Flow Rate	Max Pressure	Spout OD
NOZA.250S	Automatic 250L/min	1 1/2" F BSPP swivel	20 - 250L/min	72psi (5 bar)	35mm

Economy Automatic Nozzles

- ▶ Suitable with diesel or biodiesel up to B30.
- ▶ Automatically shuts off the flow when the vehicle tank is full.
- ▶ 3 position stay open latch.
- ▶ For use with electric pumps only.
- ▶ ¾" aluminium reducing bush available (BSH.4.3A).



NOZA.60S

NOZA.120S

Stock Code	Description	Inlet	Flow Rate	Max Pressure	Spout OD
NOZA.60S	60L/min	1" F BSPP swivel	20 - 60L/min	50psi (3.5 bar)	25mm
NOZA.120S	120L/min	1" F BSPP swivel	20 - 120L/min	50psi (3.5 bar)	30mm
BSH.4.3A	1" M - ¾" F BSPP reducing bush	-	-	-	-

Piusi Automatic Nozzles

- ▶ Suitable with diesel or biodiesel up to B30.
- ▶ Automatically shuts off the flow when the vehicle tank is full.
- ▶ 3 position stay open latch.
- ▶ For use with electric pumps only.
- ▶ ¾" Aluminium reducing bush available (BSH.4.3A).



NOZA.60SP

NOZA.120SP

Stock Code	Description	Inlet	Flow Rate	Max Pressure	Spout OD
NOZA.60SP	70L/min diesel (F00603060)	1" F BSPP swivel	10 - 70L/min	50psi (3.5 bar)	25mm
NOZA.120SP	120L/min diesel (F00610020)	1" F BSPP swivel	20 - 120L/min	50psi (3.5 bar)	29mm
BSH.4.3A	1" M - ¾" F BSPP reducing bush	-	-	-	-

Husky Automatic Nozzles

- ▶ Suitable with diesel or biodiesel up to B30.
- ▶ Automatically shuts off the flow when the vehicle tank is full.
- ▶ 3 position stay open latch.
- ▶ For use with electric pumps only.
- ▶ ¾" Aluminium reducing bush available (BSH.4.3A).
- ▶ Not suitable for vehicles with smaller filler necks.



HUSK.GS2

HUSK.HI

Stock Code	Description	Inlet	Flow Rate	Max Pressure	Spout OD
HUSK.GS2	80L/min (1-GS)	1" F BSPP swivel	20 - 100L/min	50psi (3.5 bar)	29mm
HUSK.HI	150L/min (VIII)	1" F BSPP swivel	20 - 150L/min	50psi (3.5 bar)	35mm
BSH.4.3A	1" M - ¾" F BSPP reducing bush	-	-	-	-



NOZA.X

HYTEK
ENGINEERED



Standard Speed Professional Auto Nozzles

- ▶ Suitable with diesel or biodiesel up to B30.
- ▶ Standard Speed. ATEX certified.
- ▶ Automatically shuts off flow when the vehicle tank is full.
- ▶ 3 position stay open latch (removable).
- ▶ 3/4" Aluminium reducing bush available (BSH.4.3A).
- ▶ For use with electric pumps only.
- ▶ Spout has stainless steel tip for longer life.
- ▶ NOZA.XB version for biodiesel up to B100 (no latch).

Stock Code	Description	ATEX	Inlet	Flow Rate	Max Pressure	Spout OD
NOZA.X	80L/min (female swivel inlet)	Yes	1" F BSPP swivel	10 - 80L/min	58psi (4 bar)	25mm
NOZA.XC	80L/min with magnet (C-Series)	Yes	1" F BSPP swivel	10 - 80L/min	58psi (4 bar)	25mm
NOZA.XB	For biodiesel B100	Yes	1" F BSPP swivel	10 - 80L/min	58psi (4 bar)	25mm
NOZA.209	For ALPHA MK1/209 70R	Yes	1" F BSPP swivel	10 - 80L/min	58psi (4 bar)	25mm
BSH.4.3A	1" M - 3/4" F BSPP reducing bush	-	-	-	-	-



NOZA.XU

HYTEK
ENGINEERED



Unleaded Professional Auto Nozzle

- ▶ Suitable with petrol or kerosene.
- ▶ ATEX certified.
- ▶ Automatically shuts off flow when the vehicle tank is full.
- ▶ 3 position stay open latch (removable).
- ▶ For use with electric pumps only.
- ▶ Spout has stainless steel tip for longer life.

Stock Code	Description	ATEX	Inlet	Flow Rate	Max Pressure	Spout OD
NOZA.XU	60L/min, unleaded	Yes	3/4" F BSPP swivel	10 - 60L/min	50psi (3.5 bar)	20mm



NOZA.X25

HYTEK
ENGINEERED



High Speed Professional Auto Nozzles

- ▶ Suitable with diesel or biodiesel up to B30.
- ▶ Automatically shuts off flow when the vehicle tank is full.
- ▶ 3 position stay open latch (removable).
- ▶ 3/4" Aluminium reducing bush available (BSH.4.3A).
- ▶ For use with electric pumps only.

Stock Code	Description	Inlet	Flow Rate	Max Pressure	Spout OD
NOZA.X25	140L/min	1" F BSPP swivel	15 - 140L/min	50psi (3.5 bar)	31mm
NOZA.X25C	140L/min swivel with magnet (C-Series)	1" F BSPP swivel	15 - 140L/min	50psi (3.5 bar)	31mm
NOZA.209H	For ALPHA MK1/209 90R	1" F BSPP swivel	15 - 140L/min	50psi (3.5 bar)	31mm
BSH.4.3A	1" M - 3/4" F BSPP reducing bush	-	-	-	-

Spare Parts For Professional Nozzles

A range of spares for professional nozzles.

Stock Code	Description
SPARE PARTS NOZA.X	
NOZA.XSC	Scuff guard - black
NOZA.XSCR	Scuff guard - red
NOZA.XGD	Guard (NOZA.X/NOZA.X25)
NOZA.XLR	Lever regulator assembly
NOZA.XSW	Swivel
NOZA.XSP	Spout
SPARE PARTS NOZA.X25	
NOZA.X25SC	Scuff guard
NOZA.X25SW	Swivel

HYTEK
ENGINEERED



NOZA.XSCR



NOZA.XSC



NOZA.XSP



NOZA.XSW

Plastic Body Auto Noz S/S Spout AdBlue®

- ▶ Robust lightweight plastic body.
- ▶ 304 stainless steel spout.
- ▶ Suitable with AdBlue® & non-drinkingwater.
- ▶ Automatically shuts off the flow when the vehicle tank is full.
- ▶ 3 position stay open latch.
- ▶ For use with electric pumps only.

HYTEK
ENGINEERED



NOZA.PL.AB

Stock Code	Description	Inlet	Flow Rate	Max Pressure	Spout OD
NOZA.PL.AB	Stainless steel spout	1" M BSPP fixed (3/4" swivel hose tail)	15 - 60L/min	50psi (3.5 bar)	19mm

Stainless Steel Auto Nozzles for AdBlue®

- ▶ 304 stainless steel body & spout, viton seals.
- ▶ Suitable with AdBlue® & non-drinkingwater.
- ▶ Automatically shuts off flow when the vehicle tank is full.
- ▶ 3 position stay open latch.
- ▶ For use with electric pumps only.
- ▶ See page 8 for versions with misfilling spout & vehicle tank adaptor.

HYTEK
ENGINEERED



NOZA.SS

NOZA.SS.S

NOZA.SS.AB

Stock Code	Description	Inlet	Flow Rate	Max Pressure	Spout OD
NOZA.SS	3/4" F nozzle	3/4" F BSPP fixed	15 - 60L/min	50psi (3.5 bar)	19mm
NOZA.SS.S	3/4" swivelling hose tail nozzle	3/4" hose tail swivel	15 - 60L/min	50psi (3.5 bar)	19mm
NOZA.SS.AB	1" M swivelling nozzle	1" M BSPP swivel	15 - 60L/min	50psi (3.5 bar)	19mm



NOZA.SS.ABM

NOZA.SS.SM

NOZA.SSM

Misfuelling Auto Nozzles for AdBlue®

- ▶ Suitable with AdBlue® & non-drinking water.
- ▶ Automatically shuts off flow when the vehicle tank is full.
- ▶ 3 position stay open latch. 304 stainless steel body, viton seals.
- ▶ For use with electric pumps only.
- ▶ Please note these have a magnetic misfilling spout & are supplied with a vehicle tank adaptor. This system prevents the misfilling of AdBlue® into vehicles diesel tanks when the vehicles AdBlue® tank is fitted with this vehicle tank adaptor.

Stock Code	Description	Inlet	Flow Rate	Max Pressure	Spout OD
NOZA.SSM	¾" F nozzle & adaptor	¾" F BSPP fixed	15 - 60L/min	50psi (3.5 bar)	19mm
NOZA.SS.SM	¾" swivelling hose tail nozzle & adaptor	¾" hose tail swivel	15 - 60L/min	50psi (3.5 bar)	19mm
NOZA.SS.ABM	1" M swivelling nozzle & adaptor	1" M BSPP swivel	15 - 60L/min	50psi (3.5 bar)	19mm



F00617010



R191730000

PIUSI



SB325 Automatic Nozzle for AdBlue®

- ▶ Suitable with Adblue® & non-drinking water.
- ▶ Automatically shuts off flow when the vehicle tank is full.
- ▶ 3 position stay open latch (Removable).
- ▶ For use with electric pumps only.
- ▶ If the vehicle accidentally drives away with the nozzle still in the vehicle's tank this spout will detach from the nozzle.
- ▶ Prevents damage to the dispensing pump.
- ▶ Spout can be replaced R19173000.

Stock Code	Description	Inlet	Flow Rate	Max Pressure	Spout OD
F00617000	Nozzle with s/b spout	1" M BSPP fixed (¾" swivel hose tail)	15 - 45L/min	50psi (3.5 bar)	19mm
R19173000	Replacement spout	N/A	15 - 45L/min	50psi (3.5 bar)	19mm



F18400000



Misfuelling Device Reset Kit for AdBlue®

- ▶ Use with vehicles not fitted with Elafix 40 vehicle tank adaptor.
- ▶ Fits over the spout of your current nozzle.
- ▶ Opens the magnet inside, allowing for filling of vehicle.

Stock Code	Description
F18400000	Resets misfuelling nozzles

ZVA Automatic Nozzles

Key Features:

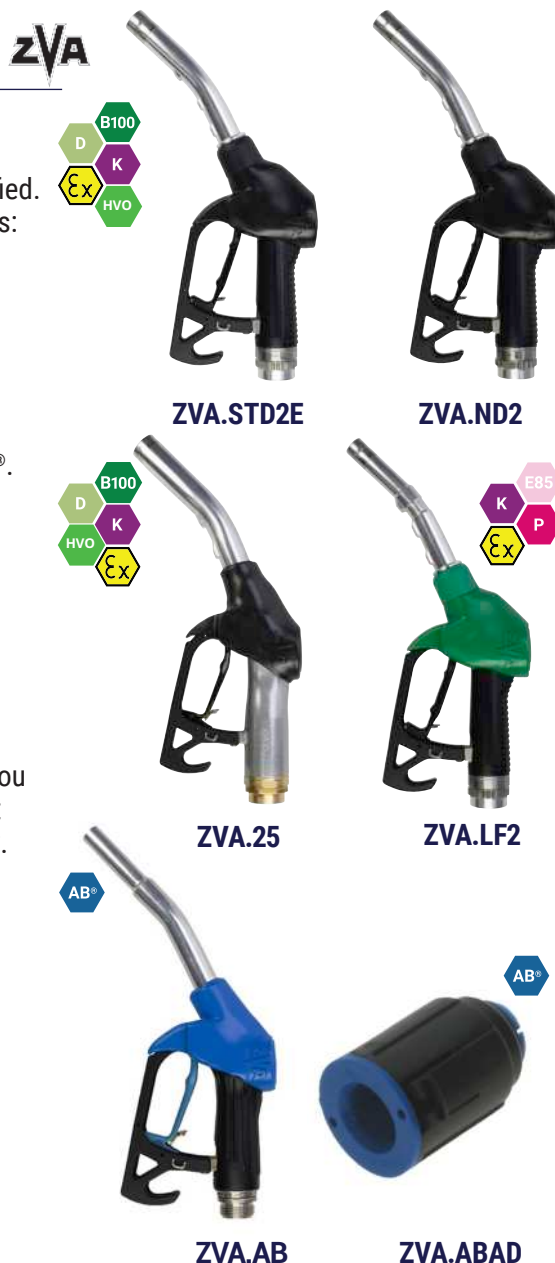
- ▶ The best refuelling nozzles money can buy!
- ▶ Almost all petrol forecourts in the UK & Europe fit these. ATEX certified.
- ▶ The Slimline was upgraded in recent years with several enhancements:
Less drain off after shut off aids for clean environment.
Shut off intelligent valve poppet minimises pressure peaks.
Stainless steel tipped spouts protects against wear & tear.

General

- ▶ Automatically shuts off flow when the vehicle tank is full.
- ▶ Options for diesel, petrol, biodiesel, ethanol E85 kerosene & AdBlue®.
- ▶ All have swivel inlets.
- ▶ Approved for resale.
- ▶ 3 position stay open latch which may be disabled if required.
- ▶ Full range of spares available see page 10 - 12.
- ▶ For use with electric pumps only.

AdBlue®

- ▶ These nozzles are compatible with the ELAFIX 40 adaptor (ZVA.ABAD) which is fitted by many vehicle manufacturers in the UK/Europe. If you are filling a vehicle with the ZVA nozzle for AdBlue®/Elafix adaptor it is not possible to accidentally cross fill the diesel tank with AdBlue®.
- ▶ Note: this nozzle will only work when the magnet adaptor is fitted to the vehicle tank filter neck (ZVA.ABAD).



ZVA.AB

ZVA.ABAD

Stock Code	Description	ATEX	Inlet	Flow Rate	Max Pressure	Spout OD
ZVA.STD2E	Diesel	Yes	1" F BSPP swivel	10 - 80L/min	50psi (3.5 bar)	25mm
ZVA.STD2EC	Diesel c/w magnet	Yes	1" F BSPP swivel	10 - 80L/min	50psi (3.5 bar)	25mm
ZVA.STD2ESBC	Diesel c/w safety break, magnet	Yes	1" F BSPP SB swivel	10 - 80L/min	50psi (3.5 bar)	25mm
ZVA.ND2	Diesel, non drip	Yes	1" F BSPP swivel	10 - 55L/min	50psi (3.5 bar)	25mm
ZVA.LF2	Petrol	Yes	¾" F BSPP swivel	10 - 55L/min	50psi (3.5 bar)	21mm
ZVA.LF2C	Petrol c/w magnet	Yes	¾" F BSPP swivel	10 - 55L/min	50psi (3.5 bar)	21mm
ZVA.LF2SBC	Petrol c/w safety break, magnet	Yes	¾" F BSPP SB swivel	10 - 55L/min	50psi (3.5 bar)	21mm
ZVA.25	140L/min	Yes	1" F BSPP swivel	15 - 140L/min	50psi (3.5 bar)	31mm
ZVA.25C	140 L/min c/w magnet	Yes	1" F BSPP swivel	15 - 140L/min	50psi (3.5 bar)	31mm
ZVA.25SBC	140 L/min c/w safety break, magnet	Yes	1" F BSPP SB swivel	15 - 140L/min	50psi (3.5 bar)	31mm
ZVA.32C	200 L/min c/w magnet	Yes	1 ½" M BSPP swivel	15 - 200L/min	87psi (6 bar)	38mm
ZVA.ABC	AdBlue® c/w magnet	Yes	1" M BSPP swivel	10 - 40L/min	50psi (3.5 bar)	19mm
ZVA.AB.SBC	AdBlue® c/w safety break, magnet	Yes	1" M BSPP SB swivel	10 - 40L/min	50psi (3.5 bar)	19mm
ZVA.ABAD	Vehicle tank adaptor for AdBlue®	n/a	-	-	-	-



Spare Parts For ZVA Slimline 2 Nozzle



We offer a range of spares for ZVA Nozzles

- ▶ Slimline 2 – see below
- ▶ Original Slimline – see page 11
- ▶ AdBlue® – see page 12
- ▶ ZVA.25 – see page 12



BSH.4.3A



EA008



EK043B



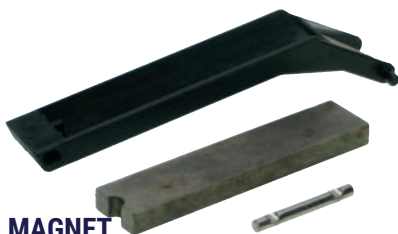
EK043G



EG281.4PT



EG281.PT



MAGNET



EK044B



EK044G



EK14B7



EK145E5



ER042.1



ER042.1U




SGR.BLK



SGR.GRN



Stock Code	Description
BSH.4.3A	1" x 3/4" reducing bush aluminium
EA008	Lever regulator assembly
E175.1F/BSC	Safety break swivel 1" female
E175.1F/BLK	Black cover for E175.1F/BSC
EA175.1C	1" captive swivel
EB278NC	Nut for ZVA rear guard
EB278SC	Screw for ZVA rear guard
ED079C	Lip seal - blue polyurethane
EG281.4P	Guard no.4
EG281.4PT	Guard no.4 & magnet
EG281.PT	Guard no.3 & magnet - ALPHA/209
MAGNET	Magnet, cover, & pins for guards
EK038	Black comfigrip
EK043B	Spout sleeve - black
EK043G	Spout sleeve - green
EK044B	Scuffguard - black
EK044G	Scuffguard - green
EK14B7	Slogan badge - B7 bio diesel
EK145E5	Slogan badge - E5 petrol
EK145E10	 Slogan badge - E10 petrol
EK172C	Strainer
ER042.1	Diesel spout no s/b
ER042.1U	Diesel spout with s/b
SGR.BLK	Splash guards - black
SGR.GRN	Splash guards - green

Spare Parts For ZVA Slimline - MK1

Below are the spare parts available for the ZVA Slimline original MK1 nozzle.



ZVA



BSH.4.3A



EA175.1C



E175.1F/BSC



EK172C



EG281.4PT



EG281.PT



MAGNET



E175.1F/BLK



EK14B7



EK145E5




EK144C



EK138C



ER242.1C.SST

Stock Code	Description
BSH.4.3A	1" x 3/4" reducing bush aluminium
E175.1F/BSC	Safety break swivel 1" female
E175.1F/BLK	Black cover for E175.1F/BSC
EA175.1C	1" captive swivel
EB278NC	Nut for ZVA rear guard
EB278SC	Screw for ZVA rear guard
ED079C	Lip seal - blue polyurethane
ED179C	Lip seal
EG281.4P	Guard no.4
EG281.4PT	Guard no.4 & magnet
EG281.PT	Guard no.3 & magnet - ALPHA/209
MAGNET	Magnet, cover, & pins for guards
EK138C	Comfigrip
EK14B7	Slogan badge - B7 bio diesel
EK145E5	Slogan badge - E5 petrol
EK145E10 	Slogan badge - E10 petrol
EK144C	Scuffguard - black
EK144GC	Scuffguard - green
EK172C	Strainer
ER242.1C.SST	Standard spout no s/b
ER242.1UC.SST	Standard spout with s/b
SGR.BLK	Splash guards - black
SGR.GRN	Splash guards - green



E175.1F/AB



EA189.1AB



ER041



ER041



E175.1F/BSC



EG371C



EA375.1C



EG371C



ER381C



EA389C



EK244C



MAGNET



EG281.4PT

EG281.PT



Spare Parts For ZVA Slimline AdBlue® - MK1

Below are the spare parts we offer for the original MK1 ZVA Slimline nozzle for AdBlue®.

Stock Code	Description
E175.1F/AB	AdBlue® s/b swivel 1" M
EA189.1AB	Lever regulator assembly
ER041	AdBlue® spout no s/b



Spare Parts For ZVA 25 - MK1

Below are the spare parts for the ZVA.25 original MK1 nozzle.



Stock Code	Description
E175.1F/BSC	Safety break swivel 1" female
E175.1F/BLK	Black cover for E175.1F/BSC
EA375.1C	1" brass swivel
EA389C	Lever regulator assembly
EB278NC	Nut for ZVA rear guard
EB278SC	Screw for ZVA rear guard
ED237C	Lever gland
EG371C	Reducing bush for E175.1F/BSC
EG281.4P	Guard no.4
EG281.4PT	Guard no.4 & magnet
EG281.PT	Guard no.3 & magnet - ALPHA/209
MAGNET	Magnet, cover & pins for guards
EK14B7	Slogan badge - B7 Biodiesel
EK244C	Scuffguard black
EK372C	Strainer
ER381C	Spout no s/b
SGR.BLK	Splash guards (black)
SGR.GRN	Splash guards (green)

Fleetman Nozzle Hangers

- ▶ Wall mount for retaining ZVA nozzles.
- ▶ Nozzles can be padlocked.
- ▶ Cast aluminium. Only accepts:
ZVA nozzles, Hytek NOZA.X & NOZA.X25 with a No 4 guard.
- ▶ Can be supplied with or without switch.
- ▶ Optional switch has a rating of 230V 12 amps.
- ▶ Nozzle not included.



HANG.NS

Stock Code	Description
HANG.NS	No switch
HANG.S	With switch

Universal Nozzle Hanger/Holster

- ▶ Adjustable universal nozzle hanger.
- ▶ Accepts almost all nozzles. Manual or automatic.
- ▶ Nozzle not included.
- ▶ Fits the following:
Piusi Self 2000, 3000, Piusi Auto 60/80.
Richards A60/A120. OPW 11 ALD/7-HL. Husky GS2.
HYTEK: NOZA.60S/120S, NOZA.X/ NOZA.X25, NOZA.SS.
ZVA: ZVA.STD2E & ZVA.25.



HANG.P

Stock Code	Description
HANG.P	Adjustable nozzle hanger

Polypropylene Fittings

- ▶ Choose from the following listed below.
- ▶ For stainless-steel fittings, see page 137.

Stock Code	Description
SKT.4P	1" socket
SKT.4.3P	1" - ¾" reducing socket
ENDGRV.1.90P	Elbow 90° 1" M BSPP 19mm hose tail
ENDGRV.13PP	Hose end 1" M BSPP 19mm hose tail
BEND.4.90.FFP	1" F BSPP bend 90°
F15484000	90° elbow x ¾" hosetail for AdBlue®



SKT.4.3P



ENDGRV.1.90P



F15484000



BEND.4.90.FFP

Swivel Fittings

- ▶ Greatly eases handling & reduces hose wear & kinking.
- ▶ All have parallel threads except SWIV.15A which has a taper M & parallel F.



SWIV.3A



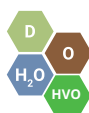
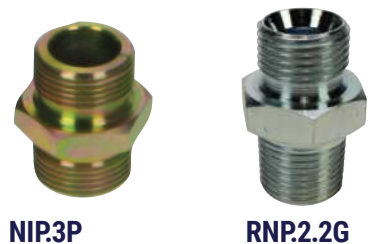
SWIV.1A



SWIV.15A

Stock Code	Description	Max Pressure
SWIV.3A	¾" M/F BSPP brass/aluminium	87psi (6 bar)
SWIV.13A	1" F BSPP - ¾" M BSPP brass/aluminium	87psi (6 bar)
SWIV.31A	¾" F BSPP - 1" M BSPP brass/aluminium	87psi (6 bar)
SWIV.1A	1" M/F BSPP brass/aluminium	87psi (6 bar)
SWIV.15A	1½" M BSPT - 1½" F BSPP brass/aluminium	87psi (6 bar)

Hose Couplings & Adaptors



- ▶ Choose from: hose tails, reducing bushes, worm drive clips, etc.
- ▶ For stainless-steel fittings, see page 137.
- ▶ For polypropylene fittings, see page 13.

Stock Code	Description
RNP.2.2G	½" M parallel (cone) - ½" M taper, plated
SWIV.3S	AdBlue® ¾" swivel - 19mm hose tail s/s
ENDGRV.3P	¾" BSPT - 19mm plastic hose tail
ENDGRV.13PP	1" M BSPP - 19mm plastic hose tail
ENDGRV.1P	1" M BSPT - 25mm plastic hose tail
ENDGRV.3	¾" M BSPT - 19mm brass hose tail
ENDGRV.1	1" M BSPT - 25mm brass hose tail
ENDGRV.13	1" M BSPP - 19mm brass hose tail
ENDGRV.31	¾" M BSPP - 25mm brass hose tail
ENDGRV.15	1½" M BSPT - 38mm brass hose tail
BSH.4.3A	1" M - ¾" F BSPP bush
NIP.3P	¾" BSPP nipple
WD16/AZ	¾" (16 - 27mm) worm drive clip
WD25/AZ	1" (25 - 40mm) worm drive clip
WD32/AZ	1½" (32 - 50mm) worm drive clip

Cam Arm Fittings 1"



- ▶ A complete range of cam arm adaptors.
- ▶ Part A male cam adaptor - 1" female thread (CAM.4A).
- ▶ Part B female coupler twin arm - 1" male thread (CAM.4B).
- ▶ Part C female coupler twin arm - 1" hose tail (CAM.4C).
- ▶ Part D female coupler twin arm - 1" female thread (CAM.4D).
- ▶ Part E male cam adaptor - 1" hose tail (CAM.4E).
- ▶ Part F male cam adaptor - 1" male thread (CAM.4F).
- ▶ Dust cap twin arm 1" female fits all 1" male cams (CAM.4DC).
- ▶ Dust plug male cam 1" fits all 1" female couplers (CAM.4DP).
- ▶ Polyethylene part D female coupler twin arm 1" female thread
- ▶ For 2" adaptors, see page 15.

Stock Code	Description
CAM.4A	1" part A cam adaptor
CAM.4B	1" part B cam coupler
CAM.4C	1" part C cam coupler
CAM.4D	1" part D cam coupler
CAM.4E	1" part E cam adaptor
CAM.4F	1" part F cam adaptor
CAM.4DC	1" dust cap
CAM.4DP	1" dust plug
CAM.4DPP	1" part D cam coupler (poly)

Cam Arm Fittings 2"

- ▶ Aluminium cam arm adaptors. Choose from the following:

Stock Code	Description
CAM.8B	2" part B cam coupler
CAM.8C	2" part C cam coupler
CAM.8D	2" part D cam coupler
CAM.8E	2" part E cam adaptor
CAM.8DC	2" dust cap
CAM.8DP	2" dust plug



IBC/Drum Adaptor

- ▶ 2" BSPP female - DIN 61 female.
- ▶ Fits Schutz drums & IBC's, Soltralenz IBC's, Van Leer Unicubes.
- ▶ Fits DN61 external screw necks on 'L' ring drums or IBC's.
- ▶ Fits Plysu 20-25L drums, 59mm necks & Valerex 60mm necks.
- ▶ Dynoplast 25L drums with DIN 61 neck.
- ▶ Fits all common drum types:
Van Leer (Valerex), Economic drums, Gallay & Mauser.



Stock Code	Description
AD.IBC	Adaptor for IBC & drums

IBC Fittings

- ▶ Use these adaptors you can convert the IBC outlet valve quickly.
- ▶ Made from 20% glass-filled polypropylene.
- ▶ 1" or 2" F part A camlock to S60x6, 3/4" or 1" M BSPP to S60x6.
- ▶ 3/4" swivel hose tail S60x6 female buttress (IBC.3HT).



Stock Code	Description
IBC.4A	1" F part A cam - S60x6 female buttress
IBC.8A	2" F part A cam - S60x6 female buttress
IBC.3	3/4" M BSPP - S60x6 female buttress
IBC.4	1" M BSPP - S60x6 female buttress
IBC.3HT	3/4" swivel hose tail - S60x6 female buttress
IBC.8C	2" part C cam - 1" hose tail



IBC Fitting for Drums & IBCs

- ▶ Prevents fuel contamination once closed.
- ▶ Suitable for both drums & IBC's.
- ▶ Fully interchangeable with a CDS connector.
- ▶ Wetted parts: polypropylene, stainless steel & Viton.
- ▶ Twist the valve open/closed, prevents pressure on the connection.
- ▶ Helps prevent spillages.



Stock Code	Description
SEC.CONA	IBC top suction connector 3/4" hose tail 90° elbow

2" Fill/Dry Break Coupling



- ▶ Designed For the rapid filling of tanks.
- ▶ Made from 316 stainless steel.
- ▶ For use with AdBlue®. EPM seals.
- ▶ Value opens & closes automatically on connection/disconnection.
- ▶ Made in the UK & 100% tested.
- ▶ Interchangeable with:
Todo, Avery Hardol, Emco Wheaton & Manntek couplings.

AB.DBF.2A

Stock Code	Description	Inlet	Max Pressure
AB.DBF.2A	Tank unit, female 2" F BSPP	2" F BSPP	150psi (10.3 bar)



Flyte Type Fuelling Coupler

- ▶ Interchangeable with most existing 'flyte type' fuel couplers.
- ▶ High impact Steel body, corrosion resistant coating for life.
- ▶ Viton Seals.
- ▶ Screw connect dry break valve allows safe & easy connection.
- ▶ Value opens & closes automatically.
- ▶ Hex socket fitting allows for a fast & easy installation.
- ▶ Heavy duty forged handle gives good operator control.
- ▶ Quick fix replacement inner cartridges available, no special tools required, eliminates the need for repair or service.

DBF.6F

Stock Code	Description	Inlet	Flow Rate	Max Pressure
DBF.6F	Flyte fuel coupler 1½" F BSPP	1½" F BSPP	50 - 650L/min	87psi (6 bar)

Micromatic IBC/Drum Valve Coupler



- ▶ Suitable with:
Adblue®, agri chemicals, herbicides, insecticides & fungicides.
- ▶ For closed liquid transfer from drums/IBC.
- ▶ Self venting to keep the drum/IBC free from contaminants.
- ▶ Fits onto existing valve extractor already fitted on drum/IBC.
- ▶ 1" BSPP outlet connection. 304 stainless steel c/w EPDM seals.
- ▶ Dry disconnect emptying with less than 1ml of residue.
- ▶ Integrates into plastic or metal drums with 2" BSP, 56 x 4mm or 2½ Amercian buttress internal thread, that have an existing extractor valve fitted.

AB.COUP.DV

Stock Code	Description	Outlet
AB.COUP.DV	Self venting drum connector	1" F BSPP

25mm (1") Suction Hose

- ▶ Suitable with diesel.
- ▶ Flexible PVC with rigid spiral embedded compound.
- ▶ Supplied per metre or on a 30m coil.
- ▶ (SH25.59) 1" suction hose assembly x 1.5m long, 1" BSPM ends with 1" foot valve and strainer.
- ▶ Options:
Ends & clips available, see page 14.



SH25.59

SH25.HN

Stock Code	Description	Bore	Max Pressure
SH25.HN	Hose (per metre) 1"	25mm	130psi (9 bar)
SH25.59	1.5m hose assembly with 1" foot valve & strainer	25mm	50psi (3 bar)

38mm (1½") Suction Hose

- ▶ Suitable with diesel or biodiesel.
- ▶ Flexible PVC with rigid spiral embedded compound.
- ▶ Supplied per metre or on a 30m coil.
- ▶ Options:
Ends & clips available.



GHM150

Stock Code	Description	Bore	Max Pressure
GHM150	Hose (per metre) 1½"	38mm	87psi (6 bar)
ENDGRV.15	Brass hose tail 1½" BSPT	-	-
WD32/AZ	Worm drive clip 1½" (32mm - 50mm)	-	-

Oil Dispensing Hose

- ▶ Suitable with oil.
- ▶ Steel braided, rubber coated cover.
- ▶ Zinc plated, steel end fittings.
- ▶ Quality machine swaged ends.



OH.4

Stock Code	Description	Length	Ends	Max Pressure
OH.4	Delivery hose assembly ½"	4m	½" M/F BSP cone seat	1885psi (130 bar)



HYTEK
ENGINEERED



GK3.LS

Gravity Feed Hose Kits

- ▶ Suitable with diesel or biodiesel.
- ▶ Provides simple & quick diesel dispensing from gravity tanks.
- ▶ A range of packaged kits including:
Hose, valve, nozzle & PTFE tape.
- ▶ All with locking angle valve.
- ▶ Robust aluminium trigger nozzle with swivel.
- ▶ All kits individually packed with contents label for easy storage.
- ▶ Special liner makes it suitable with all diesels & additives.

Stock Code	Description	Length	Bore	Max Pressure
GK3.LS	3m kit locking angle valve	3m	25mm	50psi (3.5 bar)
GK4.LS	4m kit locking angle valve	4m	25mm	50psi (3.5 bar)
GK6.LS	6m kit locking angle valve	6m	25mm	50psi (3.5 bar)



HYTEK
ENGINEERED



GK4.ABE

Swivelling AdBlue® IBC Gravity Hose Kit

- ▶ Designed specifically for use to dispense AdBlue® from IBCs.
- ▶ Choose 4m, or 6m long hose.
- ▶ All kits individually packed with contents label for easy storage.
- ▶ Connects to the IBC bottom outlet connection.
- ▶ Each kit includes:
Swivelling IBC adaptor makes installation easy.
Manual nozzle & swivelling hose tail inlet.

Stock Code	Description	Length	Bore	Max Pressure
GK4.ABE	4m x 3/4" AdBlue® IBC hose kit, swiveling IBC adaptor	4m	19mm	50psi (3.5 bar)
GK6.ABE	6m x 3/4" AdBlue® IBC hose kit, swiveling IBC adaptor	6m	19mm	50psi (3.5 bar)



HYTEK
ENGINEERED



GK4.AB

Quick Release AdBlue® IBC Gravity Hose Kit

- ▶ Designed specifically for use to dispense AdBlue® from IBCs.
- ▶ Choose 4m, 6m or 8m long hose.
- ▶ All kits individually packed with contents label for easy storage.
- ▶ Connects to the IBC bottom outlet connection.
- ▶ Each kit includes:
Quick release cam fitting.
IBC adaptor easily disconnects from the IBC.
Manual nozzle & swivelling hose tail inlet.

Stock Code	Description	Length	Bore	Max Pressure
GK4.AB	4m gravity kit for AdBlue®, quick release	4m	19mm	50psi (3.5 bar)
GK6.AB	6m gravity kit for AdBlue®, quick release	6m	19mm	50psi (3.5 bar)
GK8.AB	8m gravity kit for AdBlue®, quick release	8m	19mm	50psi (3.5 bar)

Hose For AdBlue®

- ▶ Suitable with AdBlue® & antifreeze.
- ▶ PVC, polyester braided.
- ▶ For suction or delivery.
- ▶ Can be supplied on a 60m coil (ABH3.3/4.C60M).



ABH3.4.3/4

Stock Code	Description	Length	Bore	Max Pressure
ABH3.4.3/4	4m x 3/4" hose no ends	4m	19mm	102psi (7 bar)
ABH3.6.3/4	6m x 3/4" hose no ends	6m	19mm	102psi (7 bar)
ABH3.3/4	p/mtr 3/4" no ends	p/mtr	19mm	102psi (7 bar)
ABH3.3/4.C60M	60m coil	60m	19mm	102psi (7 bar)

Hose Assemblies For AdBlue®

- ▶ Suitable with AdBlue®.
- ▶ Fitted with chrome plated female swivel couplings.
- ▶ These quality, long life EPDM hose assemblies are from the same factory as our steel braided hoses & textile braided hoses on page 21.
- ▶ Option: stainless steel adaptor to make hose ends 3/4" male.
- ▶ Choose 4m, 6m or 10m long assembly.
- ▶ Statically bonded. Textile braided. Fully tested.



ABH.4TBH

Stock Code	Description	Length	Bore	Ends	Max Pressure
ABH.4TBH	4m x 5/8" x 1" F BSPP	4m	16mm	1" F BSPP swivel	232psi (16bar)
ABH.6TBH	6m x 5/8" x 1" F BSPP	6m	16mm	1" F BSPP swivel	232psi (16bar)
ABH.10TBH	10m x 5/8" x 1" F BSPP	10m	16mm	1" F BSPP swivel	232psi (16bar)
NIP.4.3SS	1" - 3/4" BSPT nipple	-	-	-	-

Soft Wall Delivery Hose

- ▶ Suitable with diesel or biodiesel.
- ▶ Supplied by the metre or in made up hose assemblies.
- ▶ Ends held in place with stainless steel machine bands.
- ▶ Not electrically bonded. Nylon reinforcing.
- ▶ Special length assemblies made to order.
- ▶ 1" hose only (GHM2) or 50m coil (GHC).
- ▶ 3/4" hose only (GHM2.3/4) or 60m coil (GHC.3/4).
- ▶ UK manufactured high quality hose with red stripe.
- ▶ Special hose liner makes it suitable with all diesels & additives.



GH3

GHC2

Stock Code	Description	Length	Bore	Ends	Max Pressure
GH3.19	3m x 3/4" hose assembly	3m	19mm	3/4" M BSPT	50psi (3.5 bar)
GH4.19	4m x 3/4" hose assembly	4m	19mm	3/4" M BSPT	50psi (3.5 bar)
GH6.19	6m x 3/4" hose assembly	6m	19mm	3/4" M BSPT	50psi (3.5 bar)
GH3	3m x 1" hose assembly	3m	25mm	1" M BSPT	50psi (3.5 bar)
GH4	4m x 1" hose assembly	4m	25mm	1" M BSPT	50psi (3.5 bar)
GH6	6m x 1" hose assembly	6m	25mm	1" M BSPT	50psi (3.5 bar)
GHM2	1" no ends, p/mtr	p/mtr	25mm	-	50psi (3.5 bar)
GHC2	1" no ends, 50m coil	50m	25mm	-	50psi (3.5 bar)
GHM2.3/4	3/4" no ends, p/mtr	p/mtr	19mm	-	50psi (3.5 bar)
GHC2.3/4	3/4" no ends, 60m coil	60m	19mm	-	50psi (3.5 bar)

Continental



Soft Wall Dispensing Hoses – Statically Bonded

- ▶ Previously known as the Goodyear brand.
- ▶ Suitable with diesel or biodiesel up to B30.
- ▶ Commercial soft wall fuel dispensing hose assemblies.
- ▶ Statically bonded with taper ends.
- ▶ These are a fantastic quality hose assembly.
- ▶ Machine swaged ends for long life.
- ▶ Ends fixed BSP taper, choose ¾" or 1".
- ▶ Excellent fuel & weather resistant.
- ▶ Choose the length required from the options below.
- ▶ All assembled & tested in the UK.



CH4.19

CH4.25

Stock Code	Description	Length	Bore	Ends	Max Pressure
CH4.19	4m x ¾" M BSPT	4m	19mm	¾" M BSPT	50psi (3.5 bar)
CH6.19	6m x ¾" M BSPT	6m	19mm	¾" M BSPT	50psi (3.5 bar)
CH4.25	4m x 1" M BSPT	4m	25mm	1" M BSPT	50psi (3.5 bar)
CH6.25	6m x 1" M BSPT	6m	25mm	1" M BSPT	50psi (3.5 bar)
CH8.25	8m x 1" M BSPT	8m	25mm	1" M BSPT	50psi (3.5 bar)
CH10.25	10m x 1" M BSPT	10m	25mm	1" M BSPT	50psi (3.5 bar)

HYTEK
ENGINEERED



Steel Braided Hoses - Statically Bonded

- ▶ Robust steel braided hose assemblies.
- ▶ Suitable with petrol, biodiesel & ethanol.
- ▶ Used on many heavy duty commercial fuel dispensing pumps.
- ▶ Tested & approved to EN1360.
- ▶ Statically bonded.
- ▶ Steel braiding provides protection against vandalism.
- ▶ Quality long life hose assemblies.
- ▶ Chrome plated machine swaged ends.
- ▶ Ends fixed male BSP parallel, choose ¾" or 1".
- ▶ Smooth wipe clean covering.
- ▶ Excellent fuel & weather resistance.
- ▶ Spare hose end washers available only sold in packs of 10.
- ▶ Choose the length required from the options below:

Stock Code	Description	Length	Bore	Ends	Max Pressure
19MM BORE WITH ¾" ENDS					
SBH10.3/4	3.05m (10ft) x ¾" M	3.05m (10ft)	19mm	¾" M BSPP	232psi (16 bar)
SBH12.3/4	3.66m (12ft) x ¾" M	3.66m (12ft)	19mm	¾" M BSPP	232psi (16 bar)
SBH15.3/4	4.57m (15ft) x ¾" M	4.57m (15ft)	19mm	¾" M BSPP	232psi (16 bar)
SBH20.3/4	6.10m (20ft) x ¾" M	6.10m (20ft)	19mm	¾" M BSPP	232psi (16 bar)
SBH25.3/4	7.62m (25ft) x ¾" M	7.62m (25ft)	19mm	¾" M BSPP	232psi (16 bar)
WASH2	Hose washer ¾" (min order 10 plus)	-	-	-	-
25MM BORE WITH 1" ENDS					
SBH10.1	3.05m (10ft) x 1" M	3.05m (10ft)	25mm	1" M BSPP	232psi (16 bar)
SBH12.1	3.66m (12ft) x 1" M	3.66m (12ft)	25mm	1" M BSPP	232psi (16 bar)
SBH15.1	4.57m (15ft) x 1" M	4.57m (15ft)	25mm	1" M BSPP	232psi (16 bar)
SBH20.1	6.10m (20ft) x 1" M	6.10m (20ft)	25mm	1" M BSPP	232psi (16 bar)
SBH25.1	7.62m (25ft) x 1" M	7.62m (25ft)	25mm	1" M BSPP	232psi (16 bar)
WASH1	Hose washer 1" (min order 10 plus)	-	-	-	-



HYTEK
ENGINEERED



Safety Break Hose Assy – Statically Bonded

- ▶ These are the same quality steel braided hoses as above.
- ▶ Tested & approved to EN1360. Statically bonded.
- ▶ Quality long life hose assemblies.
- ▶ Chrome plated machine swaged ends.
- ▶ Ends fixed male BSP parallel, choose ¾" or 1".
- ▶ 500mm for use on ALPHA fuel pumps.
- ▶ See page 22 for hose break couplings
- ▶ Choose the length required from the options below.

Stock Code	Description	Length	Bore	Ends	Max Pressure
SBH1.3/4	275mm x ¾" M	275mm	19mm	¾" BSPP M	232psi (16 bar)
SBH1.3/4.500	500mm x ¾" M	500mm	19mm	¾" BSPP M	232psi (16 bar)
SBH1.1	275mm x 1" M	275mm	25mm	1" BSPP M	232psi (16 bar)
SBH1.1.500	500mm x 1" M	500mm	25mm	1" BSPP M	232psi (16 bar)



BRK.1A

BRK.3A

HYTEK
ENGINEERED



Professional Hose Break Couplings

- ▶ Designed to break & seal in the event of a vehicle driving off with the nozzle still in the tank.
- ▶ ATEX certified.
- ▶ A valve on each half of the coupling closes, preventing leaks.
- ▶ Suitable with diesel, petrol & biodiesel.
- ▶ Breaks when force is applied in a straight line.
- ▶ Use in conjunction with the short "pigtail" hoses see page 21.

Stock Code	Description	ATEX	Inlet/Outlet	Breaking Force
BRK.3A	¾" Hose Break Coupling	Yes	¾" F BSPP	250lbs
BRK.1A	1" Hose Break Coupling	Yes	1" F BSPP	337lbs



HBRK.3

HBRK.1C

HBRK.1

Husky



Husky Hose Break Couplings

- ▶ Designed to break & seal in the event of a vehicle driving off with the nozzle still in the tank.
- ▶ A valve on each half of the coupling closes, preventing leaks.
- ▶ Suitable with diesel, petrol & biodiesel.
- ▶ Breaks when force is applied in a straight line.
- ▶ Use in conjunction with the short "pigtail" hoses see page 21.

Stock Code	Description	Inlet/Outlet	Breaking Force
HBRK.3	¾" Hose break coupling - 2774	¾" F BSPP	300lbs
HBRK.1C	1" Hose break coupling - 6914 (replaces HBRK.1B)	1" F BSPP	200lbs
HBRK.1	1" Hose break coupling reusable	1" F BSPP	200lbs

ZVA

ZVA Safety Break Swivel



E175.1F/AB

E175.1F/BSC



- ▶ Suitable with petrol, diesel or biodiesel.
- ▶ Version for AdBlue®.
- ▶ This hose break swivel is designed to separate & seal in the event of a vehicle driving off with the nozzle still in the tank.
- ▶ Gives effective protection at any angle of pull.
- ▶ Only fits ZVA nozzles.
- ▶ If fitting to ZVA.25 high speed nozzle, bush EG371C is required.

Stock Code	Description	Inlet	Breaking Force
E175.1F/BSC	Safety break swivel petrol/diesel	1" F BSPP swivel	175 - 265lbs
E175.1F/AB	Safety break swivel for AdBlue®	1" M BSPP swivel	175 - 265lbs
EG371C	ZVA.25 fitting bush	-	-

Hose Mast / Retriever

- ▶ Keeps excess hose off the ground, prolonging hose life.
- ▶ Prevents safety hazards & hose kinking.
- ▶ A simple spring rewind lanyard that attaches to the hose.
- ▶ Only suitable for use with either 19mm or 25mm bore hoses.
- ▶ Can be used with hoses up to 6 metres long.
- ▶ Choose either floor or wall mounting versions.
- ▶ Floor mount version requires 1½" riser pipe (not included).

HYTEK
ENGINEERED



HMAST.W

HMAST.F

Stock Code	Description
HMAST.F	Floor mount (excludes riser)
HMAST.W	Wall mount

Bare Hose Reels - Ecodora

- ▶ Previously known as the ALFA brand.
- ▶ We have been supplying these for 18 yrs.
- ▶ Designed & manufactured in Italy.
- ▶ Self retracting, steel construction, powder coated finish.
- ▶ Bare Reel with no hose fitted is ATEX certified.
- ▶ Takes up to 14m x 1" hose or 20m x ¾" hose.
- ▶ See page 24 for ultra high capacity reel.
- ▶ **Extra wall mounting plate for easier installation no longer supplied (0A4054001).**



HRONH.HC

Stock Code	Description	ATEX	Max Pressure
HRONH.HC	Bare reel - no hose fitted with 1" BSPP inlet	Yes	300psi (20 bar)
0A4054001	Wall mounting plate	-	-
HR.BS	Spare bumper stop fits 3/8" to 1" hoses	-	-

Hose Reels With Hose - Ecodora

- ▶ Previously known as the ALFA brand.
- ▶ Suitable with diesel or biodiesel up to B30.
- ▶ Hose reel designed & manufactured in Italy.
- ▶ Hose added by Hytek.
- ▶ Fitted with EN1360 textile braided hose assembly.
- ▶ Includes 1m inlet hose male fixed - swivel female.
- ▶ Can be used with pumps up to 90L/min (20% flow restriction).
- ▶ **Extra wall mounting plate for easier installation no longer supplied (0A4054001).**



HR014.25

Stock Code	Description	Hose Lengths	Ends	Inlet Hose	Max Pressure
HR08.25	Hose reel with 8m x 1" hose	8m	1" M BSPP	1m	90psi (6 bar)
HR010.25	Hose reel with 10m x 1" hose	10m	1" M BSPP	1m	90psi (6 bar)
HR014.25	Hose reel with 14m x 1" hose	14m	1" M BSPP	1m	90psi (6 bar)
0A4054001	Wall mounting plate	-	-	-	-



HYTEK
ENGINEERED



Bare Hose Reels - Hytek Engineered

- ▶ Suitable for use with diesel or biodiesel up to B30.
- ▶ A robust & well proven reliable hose reel.
- ▶ Designed for use in the transport sector for HYTEK.
- ▶ Self retracting, steel construction, powder coated finish.
- ▶ The hose drum has stiffening ribs & flanged ends for longer life.
- ▶ Bare reel with no hose fitted:
(HRONH.HE1) takes up to 8m x 1" or 12m x 3/4".
(HRONH.HCHE2) takes up to 15m x 1" or 20m x 3/4".

HRONH.HCHE2

Stock Code	Description	Max Pressure
HRONH.HE1	Bare reel - no hose fitted with 1" BSPP inlet, takes 8m x 1" hose or 12m x 3/4"	300psi (20 bar)
HRONH.HCHE2	Bare reel - no hose fitted with 1" BSPP inlet, takes 15m x 1" hose or 20m x 3/4"	300psi (20 bar)
HRHE1.34	Spare bumper stop for HE1/HE2 fits 1" hose	-
HRHE1.34.3/4	Spare bumper stop for HE1/HE2 fits 3/4" hose	-

HYTEK
ENGINEERED



Hose Reels With Hose - Hytek Engineered

- ▶ A robust & well proven reliable hose reel.
- ▶ Suitable with diesel or biodiesel up to B30.
- ▶ Designed & manufactured for HYTEK.
- ▶ Fitted with EN1360 textile braided hose.
- ▶ Includes 1m inlet hose male fixed – swivel female.
- ▶ 3/4" versions for pumps up to 70L/min (20% flow restriction).
- ▶ 1" versions for pumps up to 90L/min (20% flow restriction).



HRO8.19HE1

Stock Code	Description	Hose Length	Ends	Inlet Hose	Max Pressure
HRO8.19HE1	Hose reel with 8m x 3/4" hose	8m	3/4" M BSPP	1m	232psi (16 bar)
HRO20.19HE2	Hose reel with 20m x 3/4" hose	20m	3/4" M BSPP	1m	232psi (16 bar)
HRO8.25HE1	Hose reel with 8m x 1" hose	8m	1" M BSPP	1m	232psi (16 bar)
HRO10.25HE2	Hose reel with 10m x 1" hose	10m	1" M BSPP	1m	232psi (16 bar)
HRO14.25HE2	Hose reel with 14m x 1" hose	14m	1" M BSPP	1m	232psi (16 bar)



ECODORA



Hose Reels - Ecodora - Ultra High Capacity

- ▶ Suitable with diesel or biodiesel up to B30.
- ▶ Designed & manufactured in Italy.
- ▶ Self retracting. Steel construction, powder coated finish.
- ▶ Can be used with pumps up to 90L/min (20% flow restriction).
- ▶ Bare reel takes up to 30m x 1" hose or 40m x 3/4" hose.
- ▶ HRO20.25 reel with 20m x 1", EN1360 textile braided hose assembly includes 1m inlet hose male fixed – swivel female.

HRONH.UHC

Stock Code	Description	ATEX	Hose Length	Ends	Inlet Hose	Max Pressure
HRONH.UHC	Bare reel 1" F BSPP inlet	Yes	-	-	-	145psi (10 bar)
HRO20.25	Hose reel with 20m x 1" hose	No	20m	1" M BSPP	1m	90psi (6 bar)

Hose Reel Assemblies - Statically bonded

- ▶ From the same factory as the steel braided hoses as on page 21.
- ▶ Tested & approved to EN1360.
- ▶ Statically bonded.
- ▶ Textile braided.
- ▶ Quality long life hose assemblies.
- ▶ Chrome plated machine swaged ends.
- ▶ One end swivelling female other fixed male, both BSP parallel..

HYTEK
ENGINEERED



HR020.19TBH

Stock Code	Description	Hose Length	Ends	Max Pressure
HR08.19TBH	Hose assembly only	8m	¾" F BSPP swivel/¾" M BSPP	232psi (16 bar)
HR020.19TBH	Hose assembly only	20m	¾" F BSPP swivel/¾" M BSPP	232psi (16 bar)
HR01.19TBH	Inlet hose assembly only	1m	¾" F BSPP swivel/¾" M BSPP	232psi (16 bar)
HR08.25TBH	Hose assembly only	8m	1" F BSPP swivel/1" M BSPP	232psi (16 bar)
HR010.25TBH	Hose assembly only	10m	1" F BSPP swivel/1" M BSPP	232psi (16 bar)
HR014.25TBH	Hose assembly only	14m	1" F BSPP swivel/1" M BSPP	232psi (16 bar)
HR01.25TBH	Inlet hose assembly only	1m	1" F BSPP swivel/1" M BSPP	232psi (16 bar)

Stainless Steel Hose Reels - Hytek Engineered

- ▶ Suitable with diesel or biodiesel, version for AdBlue®.
- ▶ 304 stainless construction.
- ▶ Self retracting. For use in harsh or clean environments.
- ▶ The hose drum has stiffening ribs & flange edges for longevity.
- ▶ Bare Reel (HRONH.SSHE1) takes 8m x 1" or 12m x ¾" hose.
- ▶ Bare Reel (HRONH.SSHE2) takes 15m x 1" or 20m x ¾" hose.
- ▶ ¾" hose fitted, for pumps up 70L/min (20% flow restriction).
- ▶ 1" hose fitted, for pumps up 90L/min (20% flow restriction).

HYTEK
ENGINEERED



HRONH.SSHE1

HR0S10.16HE1

Stock Code	Description	Hose Length	Ends	Inlet Hose	Max Pressure	Seal
HRONH.SSHE1	Bare reel 1" F BSPP inlet	-	-	-	300psi (20 bar)	Viton
HRONH.SSHE2 NEW	Bare reel 1" F BSPP inlet, high capacity	-	-	-	300psi (20 bar)	Viton
HR0S10.16HE1	Reel for AdBlue® with 10m x 5/8" x 1" hose	10m	1" F BSPP	1m	90psi (6 bar)	Viton
HR0S8.25HE1	Reel for Diesel with 8m x 1" hose	8m	1" M BSPP	1m	232psi (16 bar)	Viton
HR0S14.25HE2 NEW	Reel for Diesel with 14m x 1" hose	14m	1" M BSPP	1m	232psi (16 bar)	Viton

Stainless Steel Bare Hose Reels - Ecodora

- ▶ Suitable with diesel or biodiesel.
- ▶ 304 stainless construction.
- ▶ Bare reel with no hose fitted is ATEX certified.
- ▶ Self retracting. For use in harsh or clean environments.
- ▶ Bare reel takes up to 14m x 1" hose or 20m x ¾" hose.
- ▶ ¾" hose fitted, for pumps up 70L/min (20% flow restriction).
- ▶ 1" hose fitted, for pumps up 90L/min (20% flow restriction).
- ▶ **Extra wall mounting plate for easier installation no longer supplied (OA4054001), not stainless steel.**

ECODORA



HRONH.SSHC

Stock Code	Description	Hose Length	Ends	Inlet Hose	Max Pressure
HRONH.SSHC	Bare reel 1" F BSPP inlet	-	-	-	1450psi (100 bar)
OA4054001	Wall mounting plate	-	-	-	-



PIUSI



Hose Reel For AdBlue®

- ▶ Specially designed for AdBlue®.
- ▶ Self retracting.
- ▶ Can be used with pumps up to 50L/min (20% flow restriction).
- ▶ Reel inlet ¾" hose tail.

HR08.19AB

Stock Code	Description	Hose Length	Max Pressure
HR08.19AB	Hose reel with 8m x ¾" hose, no ends	8m	145psi (10 bar)



HYTEK
ENGINEERED

2 YEAR
WARRANTY



Cased Reel Oil

- ▶ Spring rewind.
- ▶ Heavy duty steel construction, powder coated.
- ▶ Fully adjustable hose stop.
- ▶ Fixed & wall mount swivel bracket, for ceiling, bench or floor mount supplied as standard.
- ▶ Spare hose assembly available.
- ▶ Supplied with a 2 year parts warranty.

HRE15.12C

Stock Code	Description	Hose Length	Ends	Inlet Hose	Max Pressure
HRE15.12C	Oil reel, fixed & swivel bracket	15m	½" M BSPT	1m	2000psi (138 bar)
HR015.12H	Spare hose assembly only	15m	½" M BSPT	-	2000psi (138 bar)



HYTEK
ENGINEERED

2 YEAR
WARRANTY



Open Reel Oil

- ▶ Spring rewind.
- ▶ Heavy duty steel construction, powder coated.
- ▶ Fully adjustable hose stop.
- ▶ HR015.12F fixed mounting plate.
- ▶ HR015.12C fixed & wall mount swivel bracket, for ceiling bench or floor mount supplied as standard.
- ▶ Spare hose assembly available.
- ▶ Supplied with a 2 year parts warranty.

HR015.12F

HR015.12C

Stock Code	Description	Hose Length	Ends	Inlet Hose	Max Pressure
HR015.12F	Oil reel, fixed	15m	½" M BSPT	1m	2000psi (138 bar)
HR015.12C	Oil reel, fixed & swivel bracket	15m	½" M BSPT	1m	2000psi (138 bar)
HR015.12H	Spare hose assembly only	15m	½" M BSPT	-	2000psi (138 bar)