

**Foot Valve & Strainers 54**

**Domestic Bowl Filters 55**

**Bowl Filters – Standard & High Speed 55**

**Piusi Oil, Fuel & Water Captor Filters 56**

**Cim-Tek Filter Range 57**

**2 Micron Water & Particle Filters 58**

**Filter Cartridges & Transfer Units 61**

**Pre-Filter Fuel Conditioners 62**

**Tank Re-Circulation & Fuel Conditioner Kits 63**

**Tank Dryers & Soakers 63**



FOOT.1A



## Foot Valve & Strainer

- ▶ Suitable with diesel, biodiesel up to B30 or water.
- ▶ Combined foot valve & strainer.
- ▶ Brass body with a steel strainer.
- ▶ Spring loaded valve poppet.
- ▶ Box quantity 10.

Stock Code	Description	Micron	Ports
FOOT.1A	1" foot valve/strainer - brass	1000	1" F BSPP



FOOT.1ABP



## Foot Valve & Strainer - AdBlue®

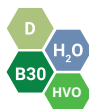
- ▶ Suitable with AdBlue®, diesel, oil & water.
- ▶ Combined foot valve & strainer.
- ▶ Stainless steel strainer with a thermoplastic body.
- ▶ Spring loaded valve poppet.
- ▶ Strainer can be removed to use as a 1" F BSPP check valve.

Stock Code	Description	Micron	Ports
FOOT.1ABP	1" foot valve/strainer - thermoplastic	1000	1" F BSPP



YSTR.1S

YSTR.1



## Y Type Strainer

- ▶ Suitable with diesel, biodiesel up to B30 or water.
- ▶ Inlet/outlet in direct line, threaded F BSPP.
- ▶ Brass body with stainless steel strainer mesh.
- ▶ YSTR.1S 1" stainless steel body version.

Stock Code	Description	Micron	Ports
YSTR.1	1" Y strainer - brass	250	1" F BSPP
YSTR.1S	1" Y strainer - stainless steel	250	1" F BSPP
YSTR.15A	1½" Y strainer - brass	250	1½" F BSPP



OFVGB



## Oil Tank Filter Valve Assembly

- ▶ Oil filter & lever action isolation valve.
- ▶ Outlet 10mm compression.
- ▶ Inlet ½" F BSPP swivel, c/w ½" M BSPP 1" M BSPT tank adaptor.
- ▶ Weight 320g (without adaptor).
- ▶ Supplied in a bag c/w a reel of PTFE tape.
- ▶ OFVCUC as OFVGB with ¼ turn valve built into 1" M tank adaptor, 10mm longer.
- ▶ UCFTV ¼ turn valve built into 1" M tank adap (no filter or handle).



OFVCUC



UCFTV

Stock Code	Description	Micron	Ports	Max Flow
OFVGB	Oil filter/valve assembly	50	½" F BSPP - 1" M BSPT	151 L/hr at 1m head
OFVCUC	As above with ¼ turn valve built into the adaptor	50	½" F BSPP - 1" M BSPT	151 L/hr at 1m head
OFV.F	Spare filter	50	-	-
UCFTV	Ultra compact fuel tank valve only	-	½" M BSPP - 1" M BSPT	-

## Bowl Filter – Fag

- ▶ Aluminium bowl filters for small bore fuel lines.
- ▶ Unscrew bowl from head to remove filter basket.



OF1/2A

Stock Code	Description	Micron	Ports	Max Pressure	Max Temp
OF3/8A	3/8" FAG	100	3/8" F BSPP	29psi (2 bar)	90°C
OF1/2A	1/2" FAG	100	1/2" F BSPP	29psi (2 bar)	90°C

## Bowl Filter Elements & Spare Parts

- ▶ Stainless steel strainer: 40 mesh FFILT.EL40 (470-15). 80 mesh FFILT.EL80 (470-16).
- ▶ Spare head FFILT.CAP (470-3). Spare bowl FFILT.BOWL (495-4).
- ▶ Bowl wrench FFILT.WP (491).

Stock Code	Description
FFILT.EL40	Strainer (40 mesh)
FFILT.EL80	Strainer (80 mesh)
FFILT.CAP	Spare head
FFILT.BOWL	Spare bowl
FFILT.WP	Bowl wrench

**PROLUBE**



FFILT.CAP



FFILT.WP



FFILT.BOWL



FFILT.EL40

## Bowl Filters - Particle Only

- ▶ Suitable with diesel or biodiesel up to B30.
- ▶ Fits on outlet side only.
- ▶ Cast aluminium head with see through polycarbonate bowl.
- ▶ Disposable filter elements remove particle contamination.
- ▶ Fitted with bottom plug for draining water.
- ▶ Option: 40/80 mesh strainer element available (FFILT.EL40/80).

**PROLUBE**



FFILT.KIT2

Stock Code	Description	Micron	Ports	Max Pressure	Max Flow
FFILT.KIT2	Kit particle (495)	10	1" F BSPP	150psi (10 bar)	100L/min (gravity 45L/min)
FFILT.EL2	Particle element	10	-	150psi (10 bar)	100L/min (gravity 45L/min)

## Bowl Filters - Water/Particle

- ▶ Suitable with diesel or biodiesel up to B30.
- ▶ Fits on outlet side only.
- ▶ Cast aluminium head with see through polycarbonate bowl.
- ▶ Disposable filter elements remove water & particle contamination.
- ▶ Fitted with bottom plug for draining water.

**PROLUBE**



FFILT.KIT2W

Stock Code	Description	Micron	Ports	Max Pressure	Max Flow
FFILT.KIT2W	Kit Water and Particle (496)	10	1" F BSPP	150psi (10 bar)	100L/min (gravity 45L/min)
FFILT.ELW2	Water and Particle element	10	-	150psi (10 bar)	100L/min (gravity 45L/min)



## Bowl Filter - High Speed

- ▶ Suitable with diesel or biodiesel up to B30.
- ▶ Heavy duty cast aluminium inline bowl filter.
- ▶ Stainless steel basket strainer.
- ▶ Fitted with bottom drain plug.
- ▶ 190mm between the port faces, 250mm high.

FFILT.15

Stock Code	Description	Micron	Ports	Max Pressure	Max Flow
FFILT.15	1½" 300L/min 180 micron	180	1½" F BSPT	80psi (5.5 bar)	300L/min



## Angled Filter

- ▶ Suitable with diesel or biodiesel up to B5 & light oils.
- ▶ Ideal to fit on our fuel transfer pumps to protect the pump chamber. See pages 94 & 102.
- ▶ Can be used to change the pump inlet/outlet direction remove the filter if used on the outlet.
- ▶ Aluminium body.

SPT.FILTA

Stock Code	Description	Micron	Ports
SPT.FILTA	Angled inlet filter	100	1" F BSPP or flanged



## Filter - Particle Only 50L/min

- ▶ Suitable with diesel & petrol.
- ▶ Removes particles only.
- ▶ Fits on the outlet side only.
- ▶ For use with pumps only.
- ▶ Aluminium head with disposable spin on filter element.
- ▶ Replacement head Cim-Tek 260 series (HYD.HDF).
- ▶ Suitable for use with petrol.

PART.KITS

Stock Code	Description	Micron	Ports	Max Pressure	Max Flow
PART.KITS	Kit 50L/min 10 micron	10	1" F BSPP	50psi (3.4 bar)	50L/min
CT70010	Element 10 micron (70010)	10	-	50psi (3.4 bar)	50L/min
CT70012	Element 30 micron (70012)	30	-	50psi (3.4 bar)	50L/min

## Filter - Particle Only 80L/min

- ▶ Suitable with diesel & petrol.
- ▶ Removes particles only.
- ▶ Fits on the outlet side only.
- ▶ For gravity feed tanks or pumps.
- ▶ Aluminium head with disposable spin on filter element.
- ▶ Replacement head Cim-Tek 400 series (HYDRA.HSHD).



PART.KITH

Stock Code	Description	Micron	Ports	Max Pressure	Max Flow
PART.KITH	Kit 80L/min 10 micron	10	1" F BSPP	50psi (3.4 bar)	80L/min
CT70015	Element 10 micron (70015)	10	-	50psi (3.4 bar)	80L/min
CT70016	Element 30 micron (70016)	30	-	50psi (3.4 bar)	80L/min

## Filter - Particle Only High Pressure

- ▶ Suitable with diesel, oil & petrol.
- ▶ Removes particles only.
- ▶ Fits on the suction or outlet side. For use with pumps only.
- ▶ Aluminium head with spin on filter element.
- ▶ Replacement head = F14528000 (60L/min) CTH1813 (100L/min).
- ▶ Ideal when high pressure is required, max pressure 174psi (12 bar).

PIUSI



F0777200A

Stock Code	Description	Micron	Ports	Max Pressure	Max Flow
F0777200A	Kit 60L/min 10 micron	10	1" F BSPP	174psi (12 bar)	60L/min
F00611000	Element 10 micron (CF60)	10	-	174psi (12 bar)	60L/min
F0914900A	Kit 100L/min 10 micron	10	1" F BSPP	174psi (12 bar)	100L/min
F09359000	Element 10 micron (CF100)	10	-	174psi (12 bar)	100L/min

## Captor Filter - Water/Particle 70L/min

- ▶ Suitable with diesel & petrol. Removes water & particles.
- ▶ Fits on outlet side only. For use with pumps only.
- ▶ Aluminium head with disposable spin on filter element.
- ▶ Kit consists of head & two elements (CFD 70-30 / F00611010).
- ▶ Replacement head CTH1801 (Hytek ref HYD.HDF).
- ▶ Note: Cim-Tek 260 series elements also fit this head (HYD.HDF).

PIUSI



F00611A00

Stock Code	Description	Micron	Ports	Max Pressure	Max Flow
F00611A00	Kit 70L/min includes 2 elements	30	1" F BSPP	50psi (3.4 bar)	70L/min
F00611010	Element 30 micron (CFD 70-30)	30	-	50psi (3.4 bar)	70L/min

## Captor Filter - Water/Particle 150L/min

- ▶ Suitable with diesel & petrol.
- ▶ Removes water & particles.
- ▶ Fits on outlet side only.
- ▶ For use with pumps only.
- ▶ Aluminium head with disposable spin on filter element.
- ▶ Replacement head CTH1813.

PIUSI



F00611A10

Stock Code	Description	Micron	Ports	Max Pressure	Max Flow
F00611A10	Kit 150L/min 30 micron	30	1" F BSPP	50psi (3.4 bar)	150L/min
F00611020	Element 30 micron (CFD 150-30)	30	-	50psi (3.4 bar)	150L/min





HYD.PKIT



## Filter - Water/Particle 70L/min

- ▶ Suitable with diesel & petrol. Removes water & particles.
- ▶ Fits on outlet side only. For use with pumps only.
- ▶ Aluminium head with disposable spin on filter element.
- ▶ Replacement head Cim-Tek 260 series (HYD.HDF).
- ▶ Suitable for use with petrol.

Stock Code	Description	Micron	Ports	Max Pressure	Max Flow
HYD.PKIT	Kit 70L/min 30 micron	30	1" F BSPP	50psi (3.4 bar)	70L/min
HYDRA.EL2	Element 30 micron (70067)	30	-	50psi (3.4 bar)	70L/min
HYD.PKIT10	Kit 70L/min 10 micron	10	1" F BSPP	50psi (3.4 bar)	70L/min
HYDRA.EL10	Element 10 micron (70062)	10	-	50psi (3.4 bar)	70L/min
HYD.ELB	B100 element 10 micron (70236)	10	-	50psi (3.4 bar)	70L/min



HYD.PKIT2



## 2 Micron Filter - Water/Particle 70L/min

- ▶ Fuel filtration is more important due to modern engines & critical power situations/generator tanks.
- ▶ This 2 micron filter removes water & particles.
- ▶ Suitable with diesel, petrol or biodiesel up to B100.
- ▶ Fits on the outlet side only. For use with pumps only.
- ▶ Aluminium head with disposable spin on filter element.
- ▶ Replacement head Cim-Tek 260 series (HYD.HDF).

Stock Code	Description	Micron	Ports	Max Pressure	Max Flow
HYD.PKIT2	Kit 70L/min 2 micron	2	1" F BSPP	50psi (3.4 bar)	70L/min
HYD.ELB2	Element 2 micron (70232)	2	-	50psi (3.4 bar)	70L/min



HYD.PKITB



## Biodiesel Filter - Water/Particle 70L/min

- ▶ Suitable with diesel, petrol or biodiesel.
- ▶ Removes water & particles.
- ▶ Fits on outlet side only.
- ▶ For use with pumps only.
- ▶ Aluminium head with disposable spin on filter element.
- ▶ Replacement head Cim-Tek 260 series (HYD.HDF).
- ▶ Suitable for use with petrol.

Stock Code	Description	Micron	Ports	Max Pressure	Max Flow
HYD.PKITB	Kit 70L/min 10 micron	10	1" F BSPP	50psi (3.4 bar)	70L/min
HYD.ELB	Element 10 micron (70236)	10	-	50psi (3.4 bar)	70L/min



HYD.GK10S



## Compact Filter - Water/Particle 80L/min

- ▶ Suitable with diesel. Removes water & particles.
- ▶ Short design makes it ideal to fit in tight spaces/tank cabinets.
- ▶ Fits on outlet side only.
- ▶ For gravity feed tanks or pumps.
- ▶ Aluminium head with disposable spin on filter element.
- ▶ Replacement head Cim-Tek 400 series (HYDRA.HSHD).

Stock Code	Description	Micron	Ports	Max Pressure	Max Flow
HYD.GK10S	Kit compact 80L/min 10 micron	10	1" F BSPP	50psi (3.4 bar)	80L/min
HYD.ELG10S	Element 10 micron (70060)	10	-	50psi (3.4 bar)	80L/min

## Filter - Water/Particle 100L/min

- ▶ Suitable with diesel.
- ▶ Removes water & particles.
- ▶ Fits on outlet side only.
- ▶ For gravity feed tanks or pumps.
- ▶ Aluminium head with disposable spin on filter element.
- ▶ Replacement head Cim-Tek 400 series (HYDRA.HSHD).

CIM-TEK



HYD.GK

Stock Code	Description	Micron	Ports	Max Pressure	Max Flow
HYD.GK	Kit 100L/min 30 micron	30	1" F BSPP	50psi (3.4 bar)	100L/min
HYD.ELG	Element 30 micron (70076)	30	-	50psi (3.4 bar)	100L/min
HYD.GK10	Kit 100L/min 10 micron	10	1" F BSPP	50psi (3.4 bar)	100L/min
HYD.ELG10	Element 10 micron (70075)	10	-	50psi (3.4 bar)	100L/min

## High Capacity Filter - Water/Particle 120L/min

- ▶ Suitable with diesel.
- ▶ Removes water & particles.
- ▶ Fits on outlet side only.
- ▶ For use with pumps only.
- ▶ Aluminium head with disposable spin on filter element.
- ▶ Replacement head Cim-Tek 400 series (HYDRA.HSHD).

CIM-TEK



HYD.PKITH

Stock Code	Description	Micron	Ports	Max Pressure	Max Flow
HYD.PKITH	Kit 120L/min 30 micron	30	1" F BSPP	50psi (3.4 bar)	120L/min
HYD.HSEL	Element 30 micron (70043)	30	-	50psi (3.4 bar)	120L/min
HYD.PKITH10	Kit 120L/min 10 micron	10	1" F BSPP	50psi (3.4 bar)	120L/min
HYD.HSEL10	Element 10 micron (70098)	10	-	50psi (3.4 bar)	120L/min

## Fuel Bowser Filter - Particle Only 150L/min

- ▶ Fitted to some fuel bowzers. For use with pumps only.
- ▶ We offer the replacement element only (not the head/kit).
- ▶ High capacity pump element (similar in size to 800 series).
- ▶ Suitable with diesel & lubricating oils.
- ▶ Removes particles only.
- ▶ Replacement head Cim-Tek 41 series (not available to UK spec).

CIM-TEK



CT70345

Stock Code	Description	Micron	Max Pressure	Max Flow
CT70345	Element 14 micron (CT70345)	14	100psi (6.9 bar)	150L/min
CT70336	<b>NEW</b> Element 14 micron (CT70336)	2	100psi (6.9 bar)	150L/min

## Gravity Filter - Water/Particle 70L/min

- ▶ Fitted to some existing gravity feed installations.
- ▶ We offer the replacement element only (not the head/kit).
- ▶ The head is no longer manufactured.
- ▶ Suitable with diesel.
- ▶ Removes water & particles.

CIM-TEK



GRAV.EL2

Stock Code	Description	Micron	Max Pressure	Max Flow
GRAV.EL2	Element 30 micron (70066)	30	50psi (3.4 bar)	70L/min



HYD.PKHC



## High Capacity Filter - Water/Particle 110L/min

- ▶ Suitable with diesel. Removes water & particles.
- ▶ Fits on outlet side only.
- ▶ For use with pumps & gravity feed tanks.
- ▶ Aluminium head with disposable spin on filter element.
- ▶ Replacement head Cim-Tek 800 series (HYD.HDA800).

Stock Code	Description	Micron	Ports	Max Pressure	Max Flow
HYD.PKHC	Kit 110L/min 30 micron	30	1" F BSPP	50psi (3.4 bar)	110L/min
HYD.EL800	Element 30 micron (70068)	30	-	50psi (3.4 bar)	110L/min
HYD.PKHC10	Kit 110L/min 10 micron	10	1" F BSPP	50psi (3.4 bar)	110L/min
HYD.EL10800	Element 10 micron (70063)	10	-	50psi (3.4 bar)	110L/min
HYD.EL800B	B100 element 10 micron (70024)	10	-	50psi (3.4 bar)	110L/min



HYD.PKHC2



## 2 Micron Filter - Water/Particle 110L/min

- ▶ Fuel filtration is more important due to modern engines & critical power situations/generator tanks.
- ▶ This 2 micron filter removes water & particles.
- ▶ Suitable with diesel, petrol or biodiesel up to B100.
- ▶ Fits on the outlet side only. For use with pumps & gravity feed tanks.
- ▶ Aluminium head with disposable spin on filter element.
- ▶ Replacement head Cim-Tek 800 series (HYD.HDA800).

Stock Code	Description	Micron	Ports	Max Pressure	Max Flow
HYD.PKHC2	Kit 110L/min 2 micron	2	1" F BSPP	50psi (3.4 bar)	110L/min
HYD.EL800B2	Element 2 micron (70037)	2	-	50psi (3.4 bar)	110L/min



HYD.PKUC



## High Capacity Filter - Water/Particle 150L/min

- ▶ For ultra high speed applications up to 150L/min.
- ▶ Suitable with diesel. Removes water & particles.
- ▶ Fits on outlet side only.
- ▶ For use with pumps & gravity feed tanks.
- ▶ Aluminium head with disposable spin on filter element.
- ▶ Replacement head Cim-Tek 800 series (HYD.HDA800U).

Stock Code	Description	Micron	Ports	Max Pressure	Max Flow
HYD.PKUC	Kit 150L/min 30 micron	30	1½" F BSPP	50psi (3.4 bar)	150L/min
HYD.EL800	Element 30 micron (70068)	30	-	50psi (3.4 bar)	150L/min
HYD.PKUC10	Kit 150L/min 10 micron	10	1½" F BSPP	50psi (3.4 bar)	150L/min
HYD.EL10800	Element 10 micron (70063)	10	-	50psi (3.4 bar)	150L/min



HYD.PKHCB



## Biodiesel Filter - Water/Particle 110-150L/min

- ▶ Suitable with diesel or biodiesel. Removes water & particles.
- ▶ Fits on outlet side only.
- ▶ For use with pumps & gravity feed tanks.
- ▶ Aluminium head with disposable spin on filter element.
- ▶ Spare element also fits 150L/min head (HYD.HDA800U).
- ▶ Replacement head Cim-Tek 800 series (HYD.HDA800).

Stock Code	Description	Micron	Ports	Max Pressure	Max Flow
HYD.PKHCB	Kit 110L/min 10 micron	10	1" F BSPP	50psi (3.4 bar)	110L/min
HYD.EL800B	Element 10 micron (70024)	10	-	50psi (3.4 bar)	110L/min
HYD.HDA800U	150L/min head 1½" F BSPP	-	1½" F BSPP	50psi (3.4 bar)	150L/min



## Filter Cartridges - Particles Only

- ▶ Ideal to replace filter cartridges in petrol station pumps.
- ▶ Removes particles only.
- ▶ Choose from the two versions below:
- ▶ 25 micron (AS-310/90) fully interchangeable with OEM filters listed below: Gilbarco/Salzkotten: 140 418 066. Dresser Wayne: 1 492 217. Schlumberger: 695 280. Tokheim: 95080 12 343.
- ▶ Scheidt und Bachmann: 85 03840.
- ▶ 10 micron (AS-313/90) interchangeable with filters listed below: Gilbarco/Salzkotten: 140 418 056. Dresser: 1 492 209. Schlumberger: 695 279. Tokheim: 95080 12 342. Scheidt und Bachmann: 85 04074.

CIMTEK



AS-310/90

Stock Code	Description	Micron	Height	OD
AS-310/90	25 micron cartridge	25	90mm	100mm
AS-313/90	10 micron cartridge	10	90mm	100mm

## Filter Elements - Particles Only

- ▶ For use with pumps only. Ideal for petrol station pumps.
- ▶ Removes particles only.
- ▶ Aluminium head.
- ▶ CT70010/12 for use with: Gilbarco & Dresser Wayne.
- ▶ CT70015 for use with: Gilbarco R18189-10, Salzkotten 140-593-564, Dresser Wayne.
- ▶ CT70016 for use with: Gilbarco R18189-30, Salzkotten 140-632-746, Dresser Wayne.
- ▶ Suitable for use with petrol.

CIMTEK



CT70010

CT70015

Stock Code	Description	Micron	Ports	Max Pressure	Max Flow
<b>STANDARD SPEED 260 SERIES (HEAD: HYD.HDF)</b>					
PART.KITS	Kit 50L/min - 10 micron	10	1" F BSPP	50psi (3.4 bar)	50L/min
CT70010	Element 10 micron (70010)	10	-	50psi (3.4 bar)	50L/min
CT70012	Element 30 micron (70012)	30	-	50psi (3.4 bar)	50L/min
<b>HIGH SPEED 400 SERIES (HEAD: HYDRA.HSHD)</b>					
PART.KITH	Kit 80L/min - 10 micron	10	1" F BSPP	50psi (3.4 bar)	80L/min
CT70015	Element 10 micron (70015)	10	-	50psi (3.4 bar)	80L/min
CT70016	Element 30 micron (70016)	30	-	50psi (3.4 bar)	80L/min

## Depuroil Filter & Transfer Unit

- ▶ Depuroil is the ideal tool for decontaminating oil by removing suspended particles. The filtering unit is composed of a volumetric vane pump that extracts the oil to be purified, sending it through a high-filtering capacity cartridge filter that removes the impurities.
- ▶ Suitable with oils up to SAE 90. Removes suspended particles.
- ▶ Depuroil filter & 230V transfer pump.
- ▶ Portable c/w suction & outlet hose.
- ▶ Option: (WO.DEP.110) 110V.

PIUSI



WO.DEP

Stock Code	Description	Micron	Max Flow
WO.DEP	Oil filtration system 230V (50300A)	10	25L/min
WO.DEPF	Replacement filter (611000)	10	-
WO.DEP.110	Oil filtration system 110V (50302A)	10	25L/min

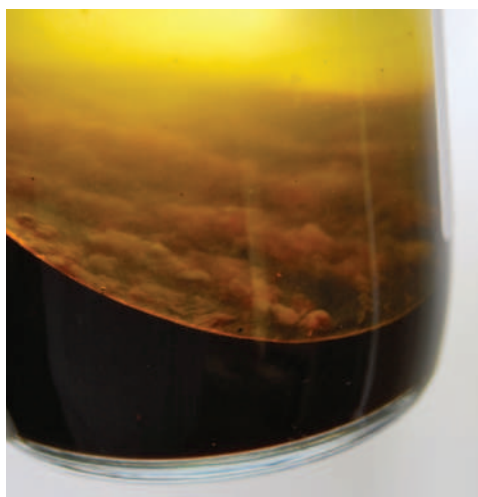


ALP.PFFC

PFFC

## Why Fit A Pre-Filter Fuel Conditioner?

- ▶ Contaminated fuel inside storage tanks can cause pump or vehicle filters to block, in some cases resulting in hefty repair bills.
- ▶ These issues are caused by microbial contamination (often known as diesel bugs which are micro-organisms that grow on water present in fuel) biofuel is hygroscopic (attracts water).
- ▶ The latest fuels contain a % of biofuel (up to 7%) & provide an ideal breeding ground for these bugs.
- ▶ Even a small % of biofuel acts as a detergent cleaning the inside of storage tanks & pipework allowing dirt/sludge to be sucked up by pumps, blocking filters. This sludge also contributes to poor emissions (seen as black exhaust smoke).
- ▶ Over time these microbes/bugs grow into large colony forming units (CFUs) which get sucked into fuel lines blocking filters.
- ▶ Microbial contamination is mostly seen as sludge that forms in the bottom of storage tanks & filters.



MICROBIAL CONTAMINATION

## Pre-Filter Fuel Conditioners – The Facts

- ▶ Petroleum diesels typically hold 60ppm of suspended water. At this level the water is almost insignificant. Provided the fuel is regularly used and replenished microbial contamination is rarely a problem.
- ▶ On the other hand, biodiesels typically hold up to 25 times more suspended water than petroleum diesel. Because biodiesel is a perfect habitat for vigorous microbial growth, this greatly increases the potential for problems. Biofuels deteriorate much faster than petroleum. Colonies of bacteria grow on the water-fuel interface, becoming heavier until they drop out of the fuel to the bottom of the tank, where biofilms & sludge quickly form.
- ▶ The bacteria breaks down the carbon chains, which reduces the combustible properties and leads to poor starting (or failure to start at all), excessive smoke, reduced power output & blocked filters.

## Pre-Filter Fuel Conditioners

- ▶ A safe solution is to pass the fuel through a pre-filter conditioner. This is a natural solution that splits up the microbial colony forming units (CFUs) stopping them from reforming and allowing them to pass safely through filters & eventually being burnt off with the fuel during the normal combustion process.
- ▶ Conditioners contain a powerful magnet which removes rust or other metallic particles contained within the fuel being passed through it. To clean the magnets of metallic contamination simply remove the conditioner from the installation & blow the contamination off with an airline.



BLOCKED FOOT VALVE

## Pre-Filter Fuel Conditioner – 1"

- ▶ Causes CFUs to break down because of the hydrodynamic effect the pre-filter fuel conditioners have on the fuel flow path passing through them.
- ▶ Allows them to pass through filters and are consumed by the engine during combustion.
- ▶ Removes metallic contamination (such as rust) from fuel and CFUs being passed through it with a powerful magnet that aids the hydrodynamic effect
- ▶ Requires no power & little maintenance.
- ▶ Weight: 1.4kgs.
- ▶ Dimensions: 130mm W, 50mm D, 135mm H.
- ▶ Fixing centres: 95mm.
- ▶ Option: ALP.PFFC fits on the suction inlet of cabinet pumps in place of flex connector.



PFFC



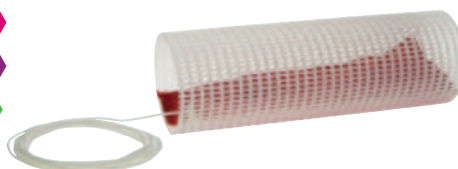
ALP.PFFC



Stock Code	Description	Ports	Max Pressure	Max Flow
PFFC	Pre-filter fuel conditioner 1" (replaces FM.ISO25)	1" F BSPP	100psi (6.9 bar)	85L/min
ALP.PFFC	Pre-filter fuel conditioner 1½" (replaces ALPHA.FM)	1½" F BSPT	100psi (6.9 bar)	85L/min

## Tank Water Soakers – Absorbs Water

- ▶ Condensation occurs in fuel storage tanks & causes contamination in the form of water that settles on the bottom of the tank.
- ▶ Lower the water soaker into the tank, attach using the 3m cord.
- ▶ Must sit on the bottom of the tank.
- ▶ When water is absorbed the bladder expands into the mesh tube.
- ▶ Check monthly.
- ▶ All versions are 300mm long.



WS3

Stock Code	Description
WS2	Absorbs 489ml, 56mm diameter
WS3	Absorbs 1.59L, 100mm diameter

## Tank Dryer - Absorbs Water

- ▶ Condensation occurs in fuel storage tanks & causes contamination in the form of water that settles on the bottom of the tank.
- ▶ Lower the tank dryer into the tank, attach using the 2.5m cord.
- ▶ Must sit on the bottom of the tank.
- ▶ Has a stainless steel rod/weight inside.
- ▶ When water is fully absorbed the tank dryer swells
- ▶ Check monthly.
- ▶ Ideal for use in vehicle & domestic storage tanks.
- ▶ 600mm long, diameter when full 40mm.



TD

Stock Code	Description
TD	Absorbs 350ml (60038), 40mm diameter